



new. efficient. optimal.



Your optrel partner:



ROCKMOUNT
Research and Alloys, Inc.



Automatically better welding

new design.
efficient performance.
optimal price.

The optrel **neo p550** combines the advantages of the proven p550 helmet shell with the newest ADF technology from optrel. Experience true color vision in a mid-price helmet. With a new efficient energy concept that keeps it action-ready for 3,000 hours. And a reaction time of only 0.1 ms after striking a welding arc. Perfect protection and comfort for your eyes!



COLOR SPECTRUM OF A
STANDARD ADF



COLOR SPECTRUM OF THE
OPTREL NEO P550 WITH TRUE COLOR VIEW



The welder's normal world: environment in green shades with low contrast levels.

The optrel revolution: finally experience true color view during the whole welding process.

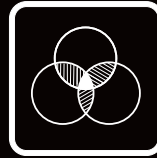
A classic with newest ADF technology.

The optrel p550 is one of the best-selling welding helmets from optrel. With its new ADF technology it now gets even better.



SHADE LEVEL 4 / 9-13

With a seamless shade level adjustment from DIN 9 to 13, the **optrel neo p550** is the perfect solution for all popular welding applications.



TRUE COLOR VIEW

The specially developed UV/IR filter allows a realistic perception of colors, at long last bringing color into the world of the welder.



DELAY FUNCTION

After shutdown of the welding arc, the ADF momentarily stays closed to protect eyes from the strong afterglow of the welding seam.



LIGHTWEIGHT





Weighing only 495g, the **optrel neo p550** is one of the lightest automatic welding helmets available. Its ergonomic design minimizes strain on the head and neck, ensuring comfort throughout the work day.

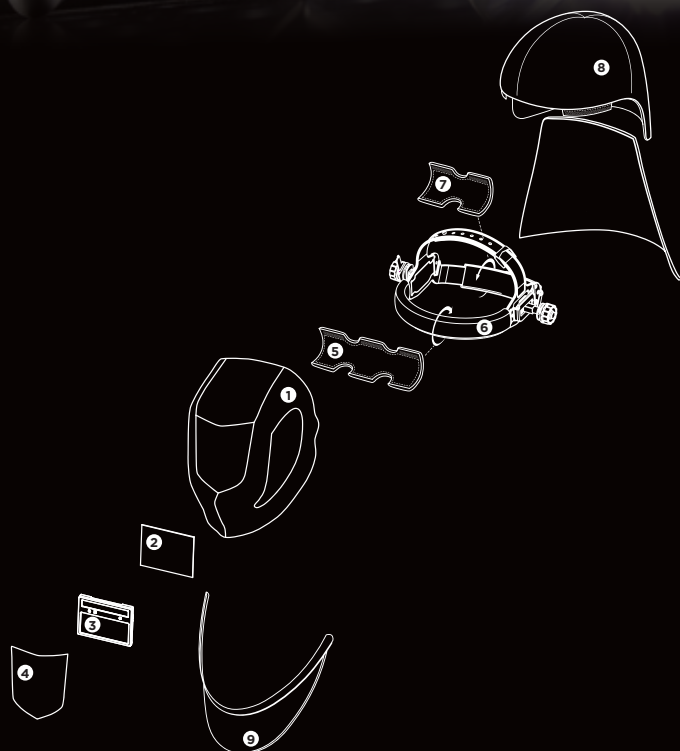


NEW ENERGY CONCEPT

With its radically more energy efficient electronic system including a „Super-Sleep-Mode“ the **neo p550** stays ready to use for approximately 3,000 hours without changing batteries.



| Helmet system | Item no. | Helmet system | Item no. |
|--|----------|--|----------|
|  neo p550 welding helmet black | 1007.000 |  neo p550 welding helmet black with hard hat | 1007.001 |
|  neo p550 welding helmet green | 1007.011 |  neo p550 welding helmet carbon | 1007.073 |



| Spare parts and accessories | Item no. |
|---|----------|
| 1a Helmet shell neo p550 black | 5001.650 |
| 1b Helmet shell neo p550 green | 5001.661 |
| 1c Helmet shell neo p550 carbon | 5001.651 |
| 2 Inside cover lens (5 pcs.) | 5000.001 |
| 3 ADF cartridge neo p550 | 5012.700 |
| 4 Front cover lens (5 pcs.) | 5000.250 |
| 5 Adjustable headband (including sweatband and comfortband) | 5003.250 |
| 6 Cotton sweatband (2 pcs.) | 5004.073 |
| 7 Comfortband (2 pcs.) | 5004.020 |
| 8 Head & neck protector, leather | 4028.016 |
| 9 Chest protector, leather | 4028.015 |



TECHNICAL DATA

| | | |
|--------------------------|---|-------------------------|
| Description | ADF cartridge with true color view Shade levels from 9 to 13 continuously adjustable with knob; continuously adjustable sensitivity (with 'super high' range) and delay function | |
| Shade levels | inactive: | Shade level 4 |
| | active: | Shade level 9-13 |
| Power supply | Solar cells, 2 pcs batteries 3V exchangeable (CR2032) | |
| Operating time batteries | Approx. 3,000 hours (operating) | |
| Sensors | 3 sensors | |
| Sensitivity | Continuously adjustable, new with "Super High" sensitivity | |
| Switching time | light to dark: 0.100 ms at room temperature 0.100 ms at 55°C dark to light: 0.05 s - 1.0 s | |
| Classification EN379 | Optical class: | 1 |
| | Scattered light: | 1 |
| | Homogeneity: | 1 |
| | Angular dependence: | 2 |

| | |
|-----------------------|---|
| Field of view | 50 x 100 mm 90 x 110 x 9.5 mm |
| Shape stability | Welding mask: up to 220°C / 428°F Front cover lens: up to 137°C / 266°F |
| Eye protection | Ultraviolet / Infrared Protection: maximum protection at any shade level |
| Operating temperature | -10°C to + 70°C / 14°F to 158°F |
| Storage temperature | -20°C to + 70°C / -4°F to 176°F |
| Weight | 495 g / 17.4 oz |
| Application ranges | Any electric arc welding process Electrode Welding (Stick Welding, SMAW) / MIG / MAG (GMAW) / GMAW High melting rate process / Flux Cored Wire Welding / TIG welding (GTAW) / Plasma Arc Welding / Plasmacutting & Oxy-gas Welding <i>Prohibited for laser welding!</i> |
| Scope of delivery | Welding helmet, instruction manual, batteries |
| Standards | CE, ANSI, EAC, AS/NZS, complies with CSA Z94.3 |
| Warranty | 2 years (except batteries) |

Professional welding with true color view.

Your optrel partner:



ROCKMOUNT
Research and Alloys, Inc.

Rockmount Research and Alloys

Optrel National In-Person
Demonstration Partner

Rockmountwelding.com
getintouch@rockmountwelding.com
360-254-2020

Contact Us for a Demo



optrel AG
industriestrasse 2
CH-9630 wattwil
switzerland
www.optrel.com
info@optrel.com

optrel.com



9412131.00